



Step-by-step installation instructions:

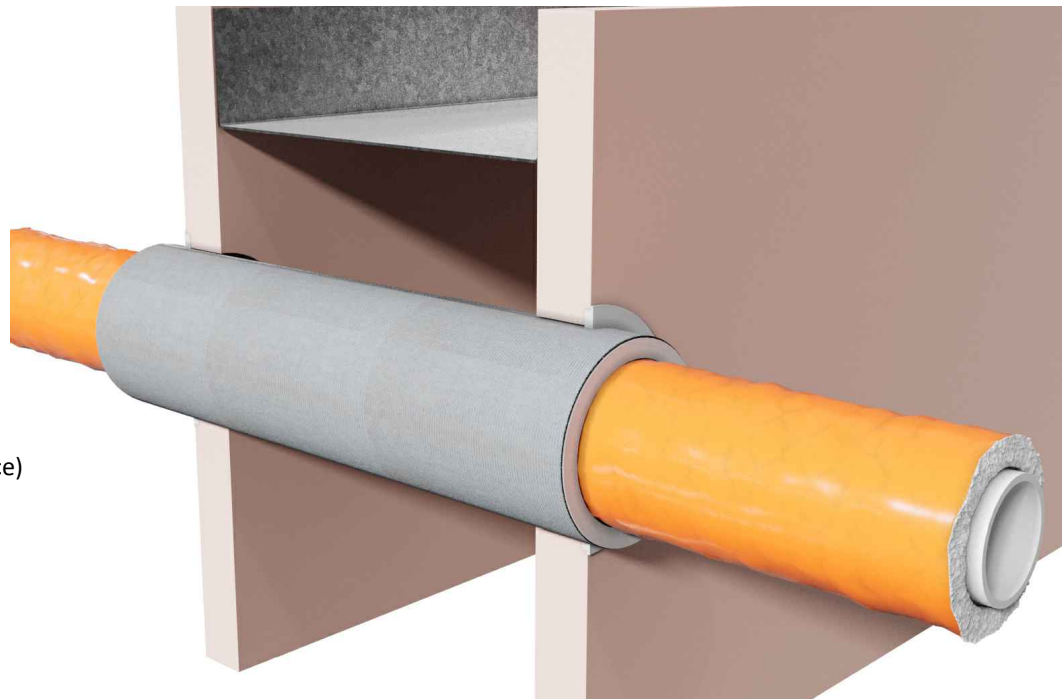
1. Ensure the aperture is free from dust and debris.
2. Cut AGNI-Sleeve to 138mm wide.
3. Measure and cut one revolution of 138mm AGNI-Sleeve to fit the aperture.
4. Pass AGNI-Sleeve through the wall with 10mm extending beyond the plasterboard lining on both sides of the wall.
5. Apply a bead of AGNI-Seal (5mm nominal) between the wall and AGNI-Sleeve.

Notes on Kelox Pipes:

Kelox pipes are constructed from polyethylene (raised temperature resistance) around an aluminium core - (PERT-AL-PERT)

Insulation is PE Foam up to 13mm thick (orange colour)

Tested pipe was 20mm with max thickness insulation (13mm)



Technical Information

Substrate	<ul style="list-style-type: none"> • Min. 92mm steel / timber stud wall with a minimum of one layer of 13mm (or greater) FR plasterboard on each side, with or without insulation. • Min. 118mm concrete wall/masonry wall/block wall
Service range	Kelox + insulated pipe
Annular gap	5-9mm
AGNI-Products	AGNI-Sleeve, AGNI-Seal
Protection installation	Both sides of the wall

Compliance Information

Standards	AS1530.4-2014, AS4072.1-2005
FRR/FRL	-/60/45
Reference	RIRF24082 AP-102



Agnitek[®]
FIRE RATED TECHNOLOGY

8 Clare St Bayswater
VIC 3153, AUSTRALIA
www.agnitek.com.au

Disclaimer

Agnitek reserves the right to modify product specifications without prior notice due to its ongoing research, development & certification programme. The information in this document is provided in good faith and is intended for guidance purposes only. Any accompanying drawings are solely for illustrative purposes. Since Agnitek cannot oversee installation methods or ensure site conditions, no warranties, expressed or implied, are intended regarding the products' actual performance. We do not accept liability for any loss, damage, or injury from using this information. Please take a look at the test reports displayed on a relevant AGNI-System webpage for all compliance specifics.

Date | 20.06.2024

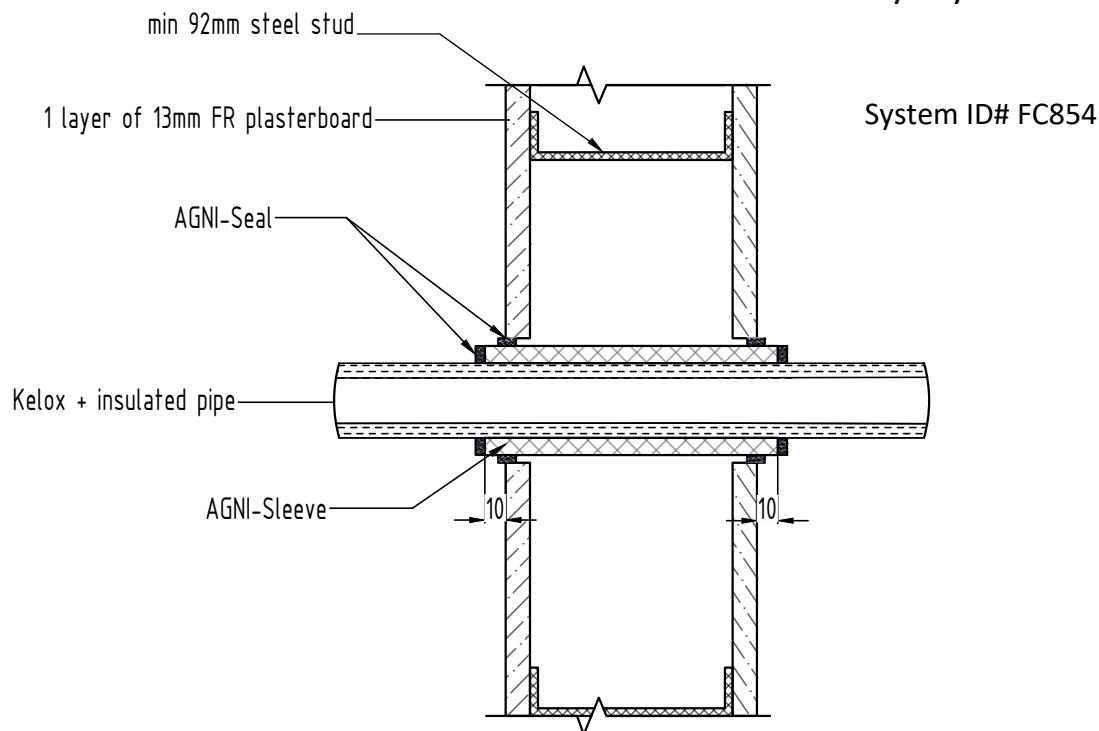


FIRESTOP CENTRE

Authorised New Zealand Distributor
Ph (09) 483 4000 www.firestopcentre.co.nz

AGNI-Sleeve in 1 x 13mm Plasterboard Wall or 118mm Concrete Wall

Kelox (PERT-AL-PERT) pipe with up to 13mm Insulation
FRR -/60/45



Technical Information

Substrate	<ul style="list-style-type: none"> Min. 92mm steel / timber stud wall with a minimum of one layer of 13mm (or greater) FR plasterboard on each side, with or without insulation. Min. 118mm concrete wall/masonry wall/block wall
Service range	Kelox + insulated pipe
Annular gap	5-9mm
AGNI-Products	AGNI-Sleeve, AGNI-Seal
Protection installation	Both sides of the wall

Compliance Information

Standards	AS1530.4-2014, AS4072.1-2005
FRR/FRL	-/60/45
Reference	RIRF24082 AP-102



8 Clare St Bayswater
VIC 3153, AUSTRALIA
www.agnitek.com.au

Disclaimer

Agnitek reserves the right to modify product specifications without prior notice due to its ongoing research, development & certification programme. The information in this document is provided in good faith and is intended for guidance purposes only. Any accompanying drawings are solely for illustrative purposes. Since Agnitek cannot oversee installation methods or ensure site conditions, no warranties, expressed or implied, are intended regarding the products' actual performance. We do not accept liability for any loss, damage, or injury from using this information. Please take a look at the test reports displayed on a relevant AGNI-System webpage for all compliance specifics.

Date	20.06.2024
------	------------